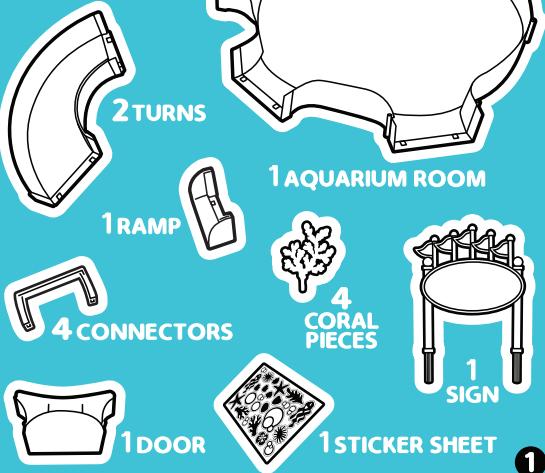


# ZhuZhu AQUARIUM

## AGE GRADE 4+

This package includes:



## Unpacking your ZhuZhu Aquarium™ Starter Set

Remove all contents from package and discard any rubber bands, wire ties or other packaging materials that are not part of the product.

### Please Note

- Retain these instructions as they contain important information.
- Read all of the instructions before assembling your Starter Set.
- Some adult assembly is required.
- The ZhuZhu Aquarium™ Starter Set is a toy. It is not intended for use with live animals or in water.

The Starter Set is made to be used with ZhuZhu Aquarium™ Fish which are sold separately. The Fish and the Starter Set work best on an open floor.

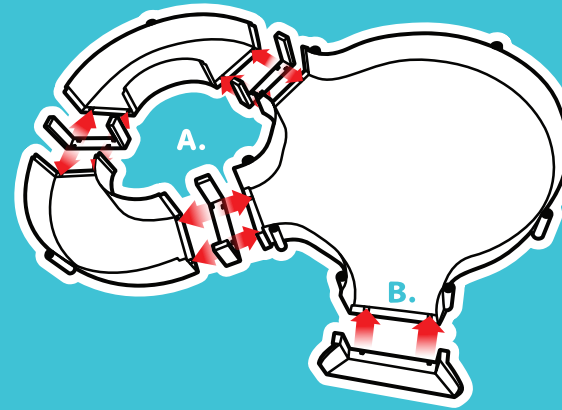
For more information on the ZhuZhu Aquarium™ and other aquarium add-on sets and accessories please go to:

[www.zhuzhuaquarium.com](http://www.zhuzhuaquarium.com)

## Assembling your ZhuZhu Aquarium™ Starter Set

### A. Attaching Turns to Aquarium Room:

Connect Turns to two adjacent doorways on the Aquarium Room by using Connectors.

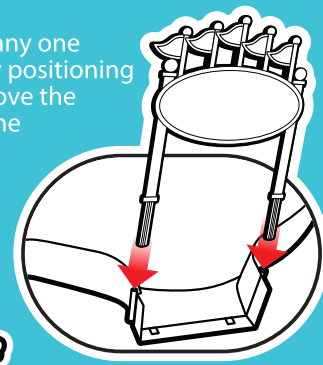


### B. Attaching the Ramp to Aquarium Room:

Connect the Ramp to one of the 3 entryways by pushing the bottom and sides of Ramp connector to the bottom and sides of the entryway of the Aquarium Room.

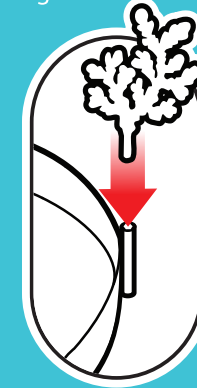
## Placing the Sign:

Attach the sign to any one of the entrances by positioning the sign's posts above the matching slots in the playset at the right and left sides of an entrance and pressing down, pushing down until they are a snug fit.



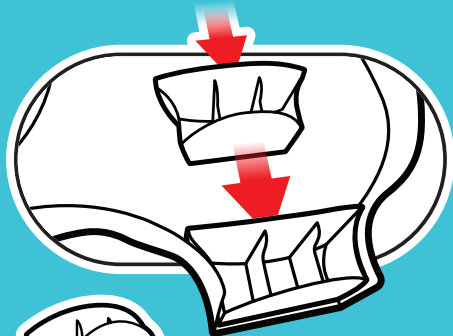
## Placing the Coral

Attach the coral to the playset by inserting the coral bases into the holes located around the perimeter and top of the playset.



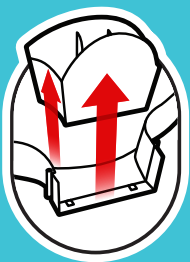
## Inserting the Door to Aquarium Room

You can push the Door (entry blocker) into any of the entryways by positioning it inside the doorway (from the inside of the room and on the curved side) and pushing it outwards. It will stop when it can't move any further.



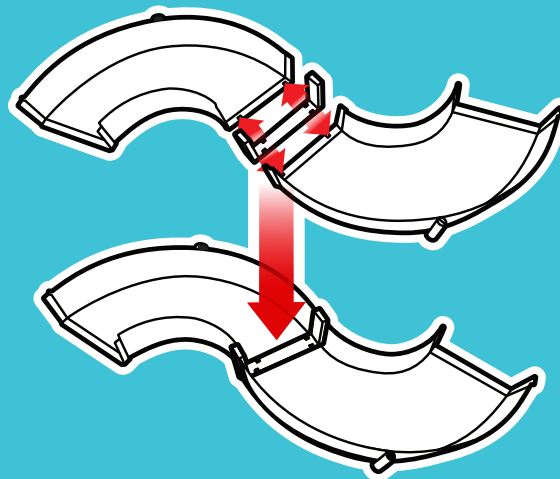
## Removing the Door to Aquarium Room

Slide the door up and out to remove.



## Assembling Turns as an S-Curve:

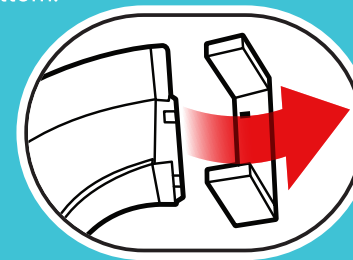
By reversing one of the Turns and using a Connector, you can create an S-Curve track.



The S-Curve needs only one doorway and can be attached to other add-on sets sold separately.

## Disassembly

To remove Connectors, gently pull apart from the bottom.



## Troubleshooting

- Designed to act randomly and unpredictably, Fish may not act the same each time.
- If Fish gets stuck entering the Starter Set, check all the snaps and connector junctions.
- Fish works best on smooth, hard, and even surfaces. It will not work in water, carpet, or other soft surfaces. Do not use in sand or grass.
- The Starter Set also works best on smooth, hard, and even surfaces.

- FISH SOLD SEPARATELY!
- DO NOT PUT FISH IN WATER!
- KEEP HAIR AWAY FROM WHEELS!

For Questions and Comments please call: 1-800-225-9319

©2023 Cepia LLC.  
St. Louis, Missouri 63124  
Made in China

**WARNING:**  
CHOKING HAZARD - Small parts  
Not for Children Under 3 Years



## WARNING:

All rubber bands and wire ties, as well as tags, are not parts of this toy and should be discarded for your child's safety. Colors and contents may vary from those shown on the package.

Printed in China  
REV T12102009 86650